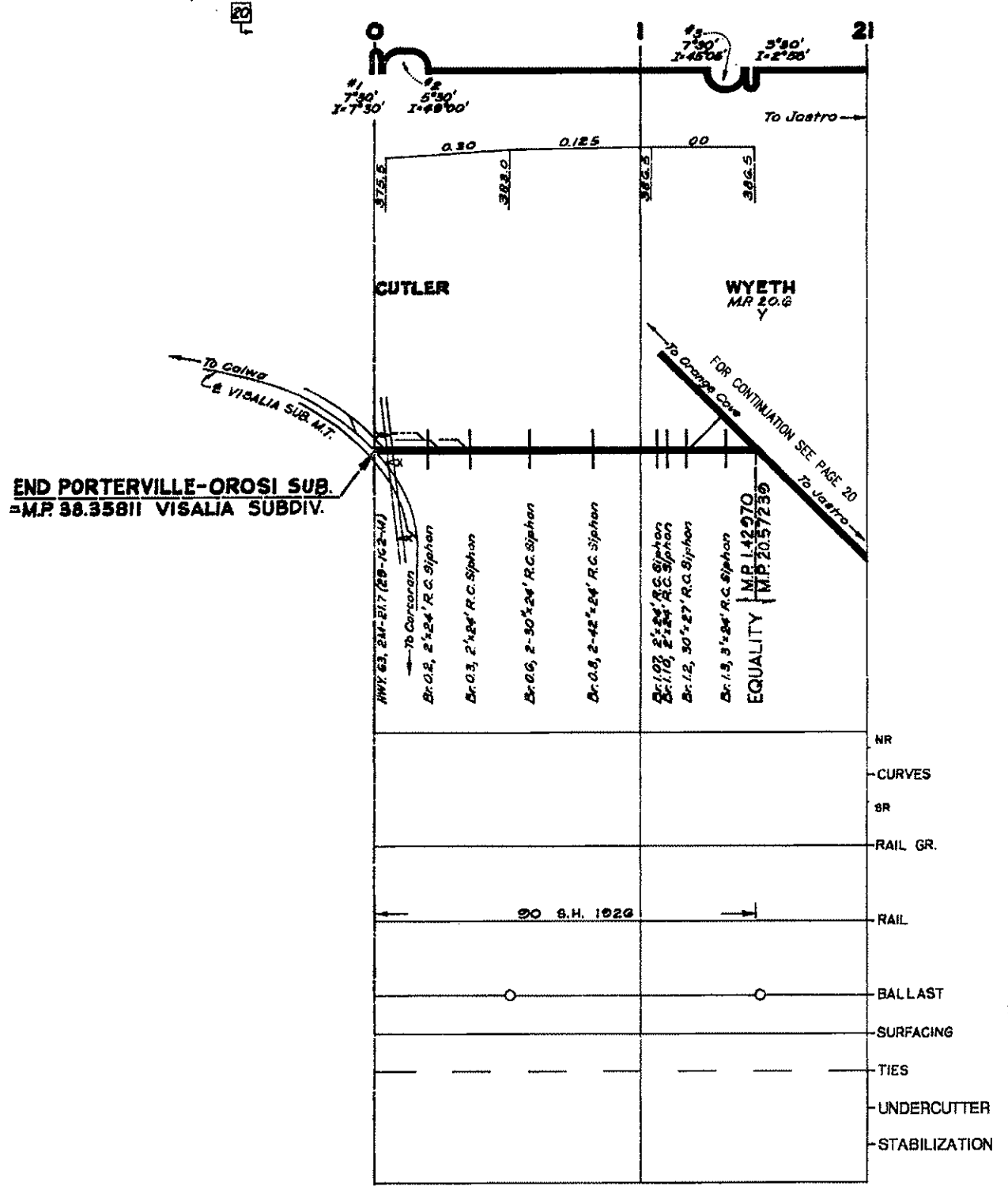
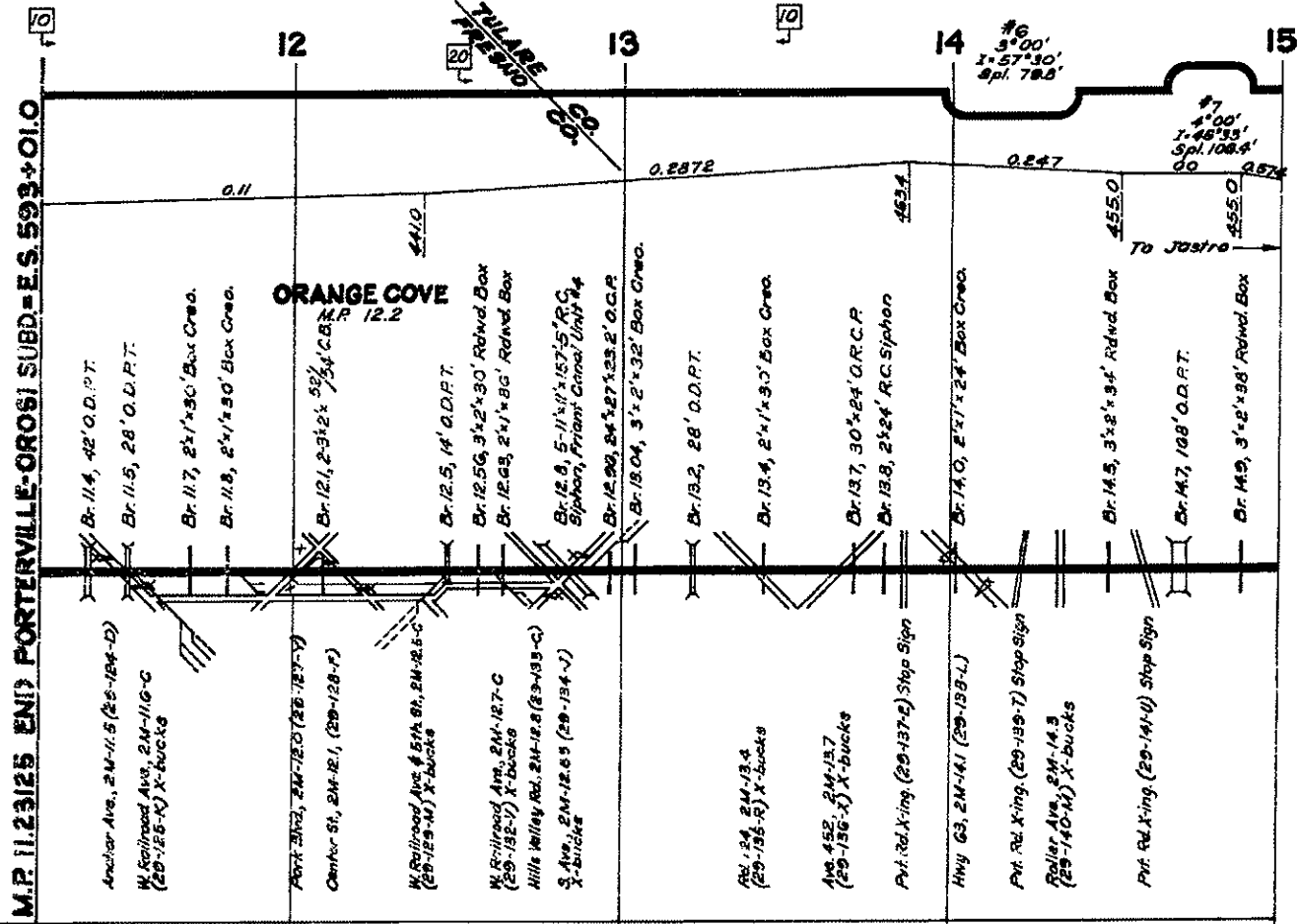


*Intentionally Blank*



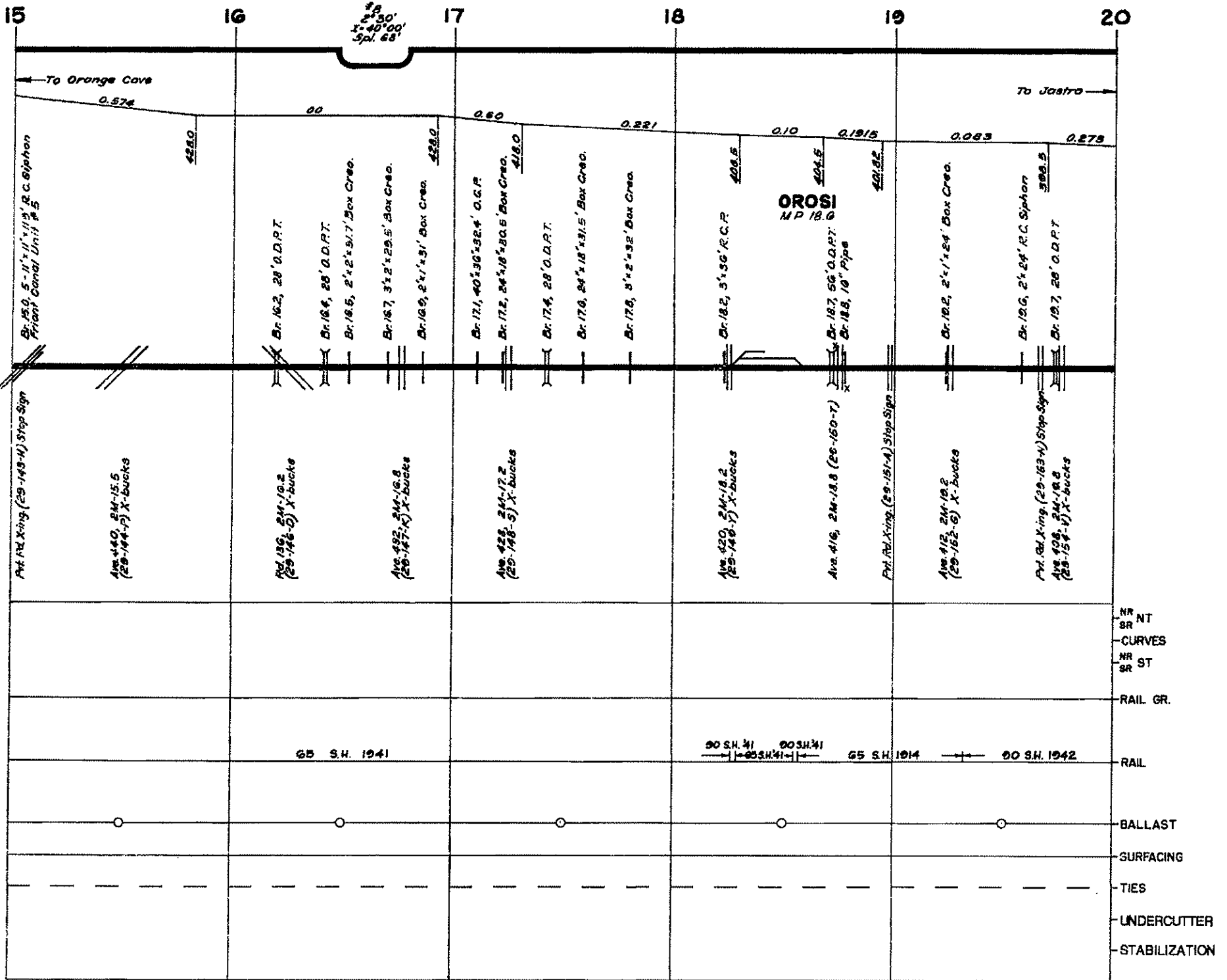


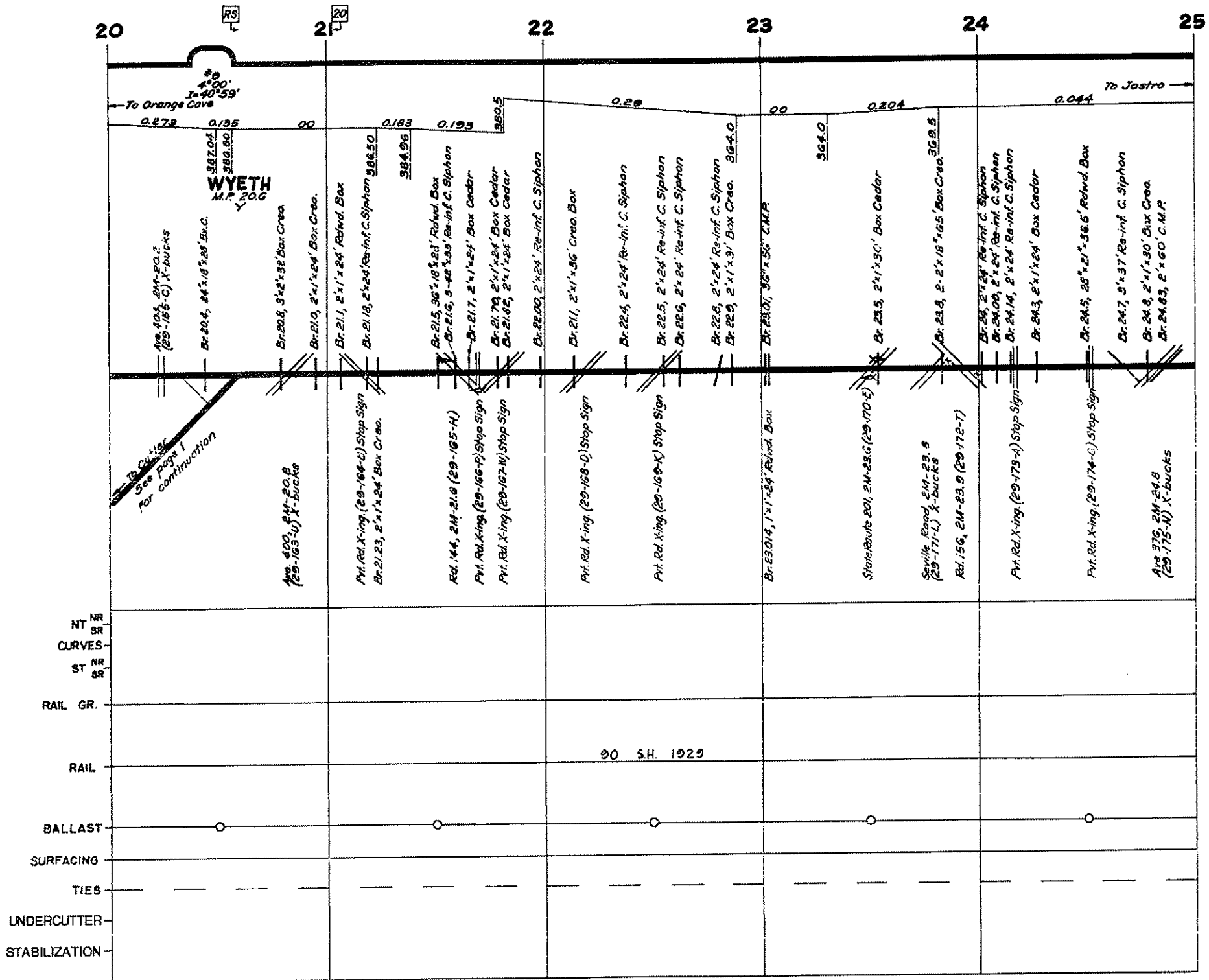
M.P. 11.23125 END PORTERVILLE-OROSI SUBD.-E.S. 593+01.0

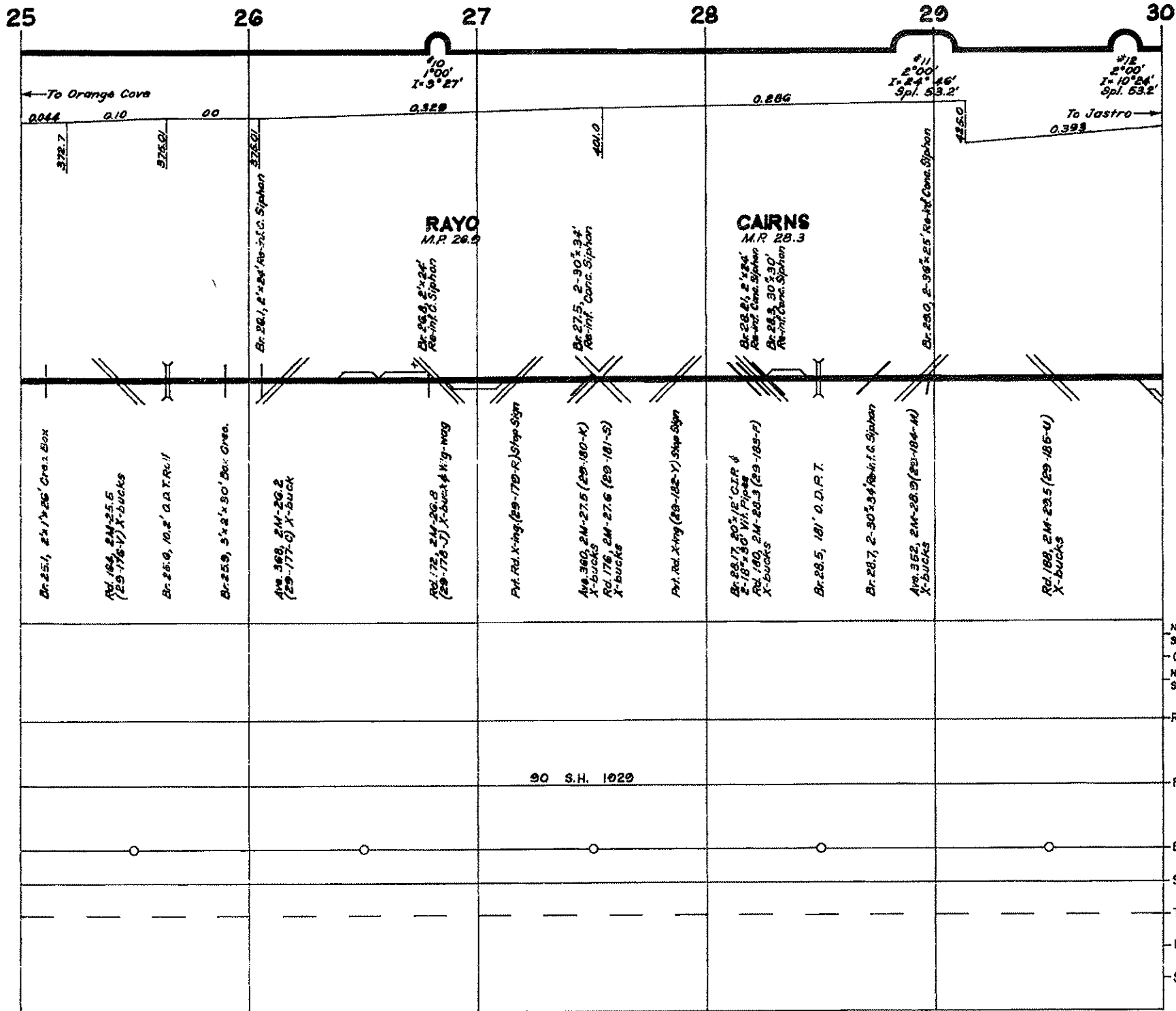
NR	
CURVES -	
SR	
RAIL GR.	
RAIL	<p>65 S.H. 1014</p> <p>110 S.H. 1014</p> <p>110 S.H. 1014</p> <p>110 S.H. 1014</p> <p>65 S.H. 1014</p> <p>65 S.H. 1041</p>
BALLAST	
SURFACING	
TIES	
UNDERCUTTER -	
STABILIZATION -	

REVISED FEB. 1992

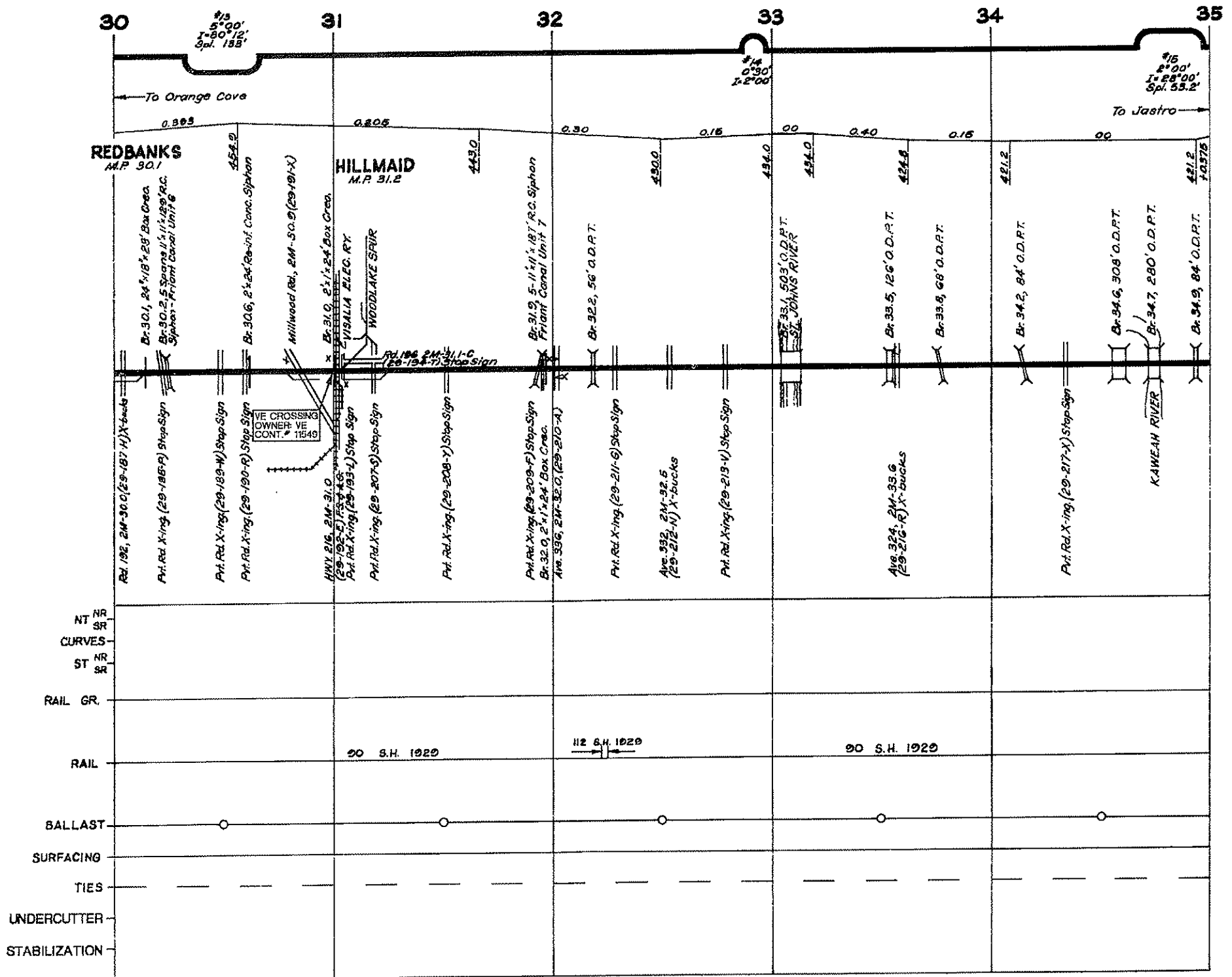
PORTERVILLE SUBDIVISION

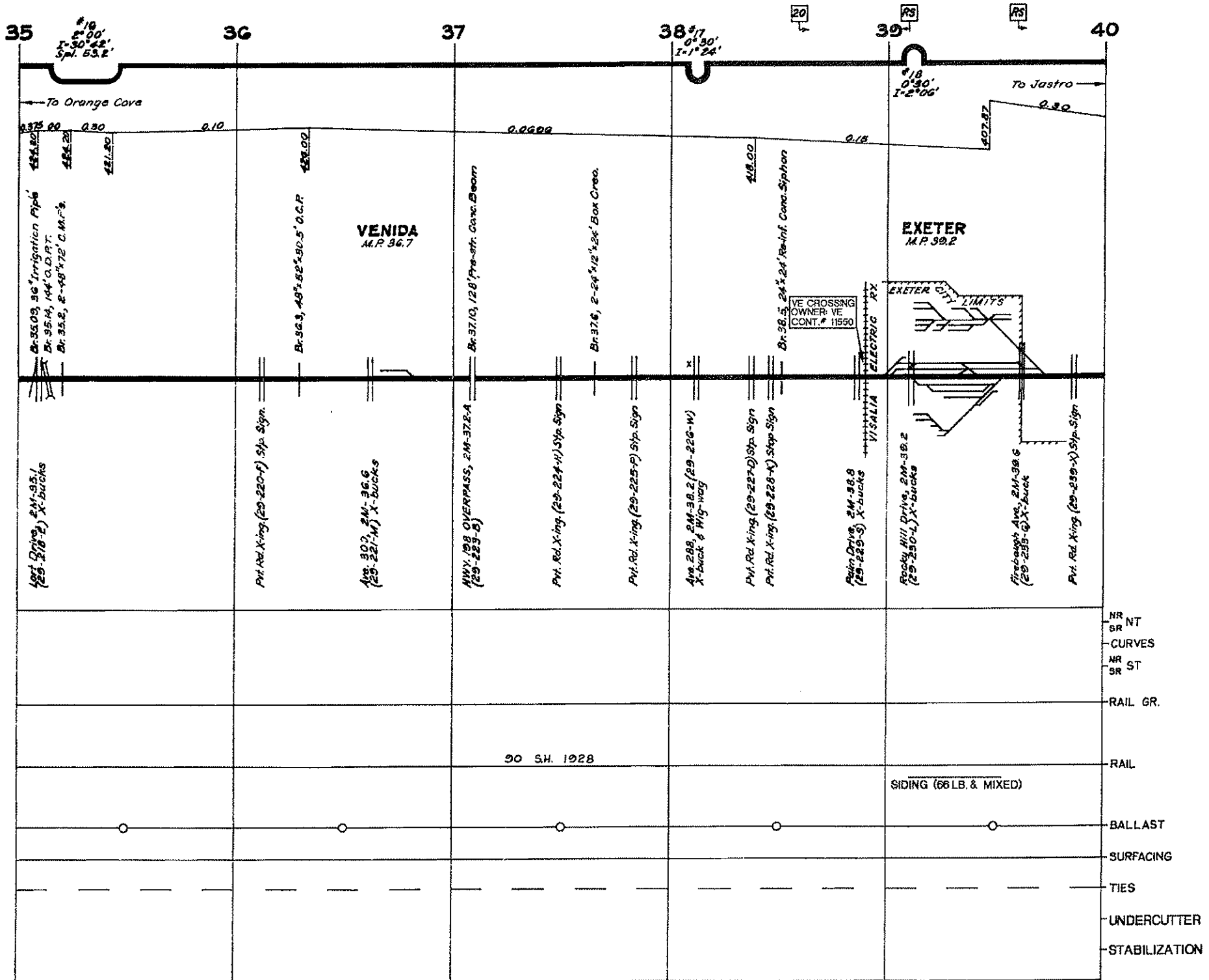




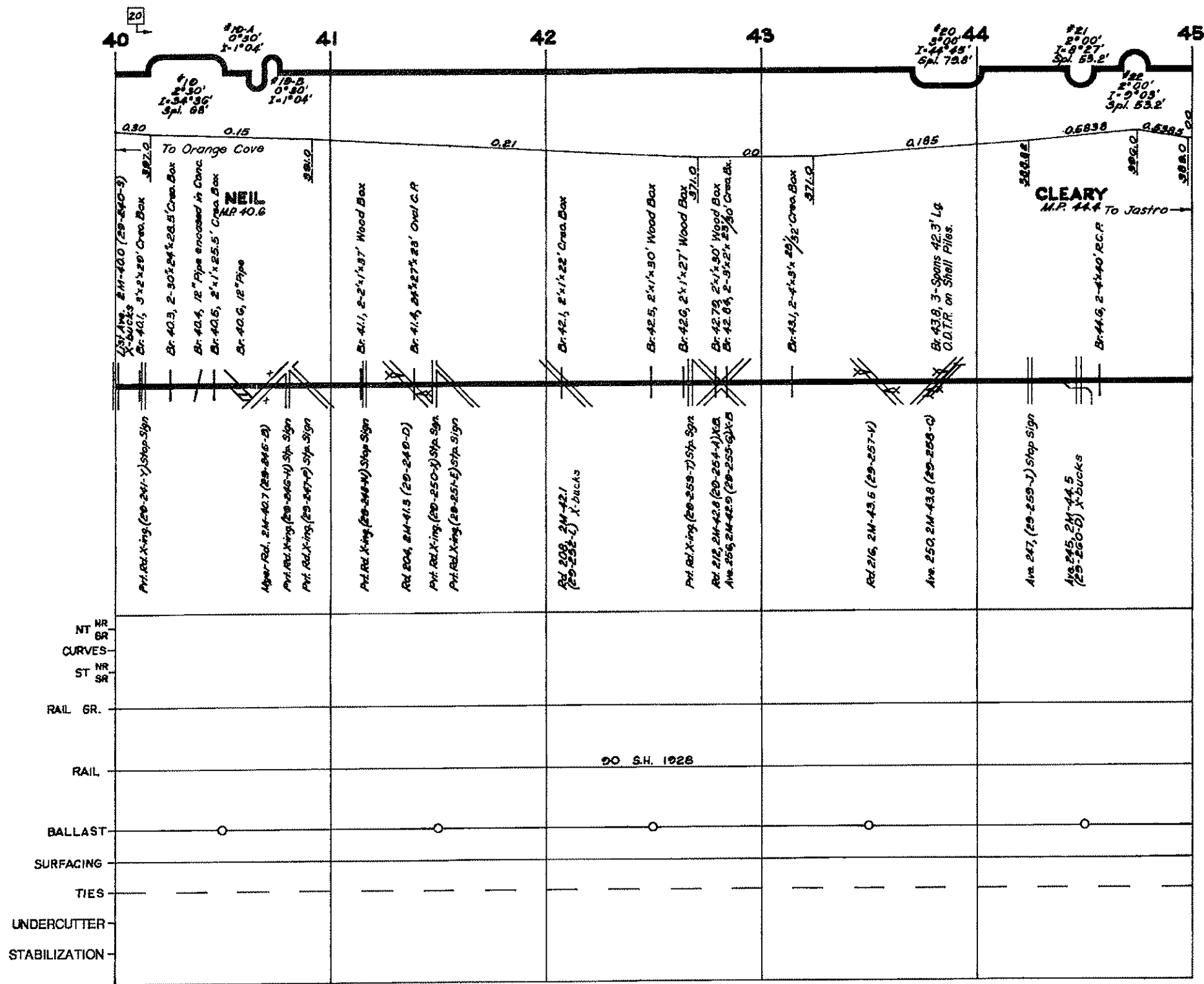


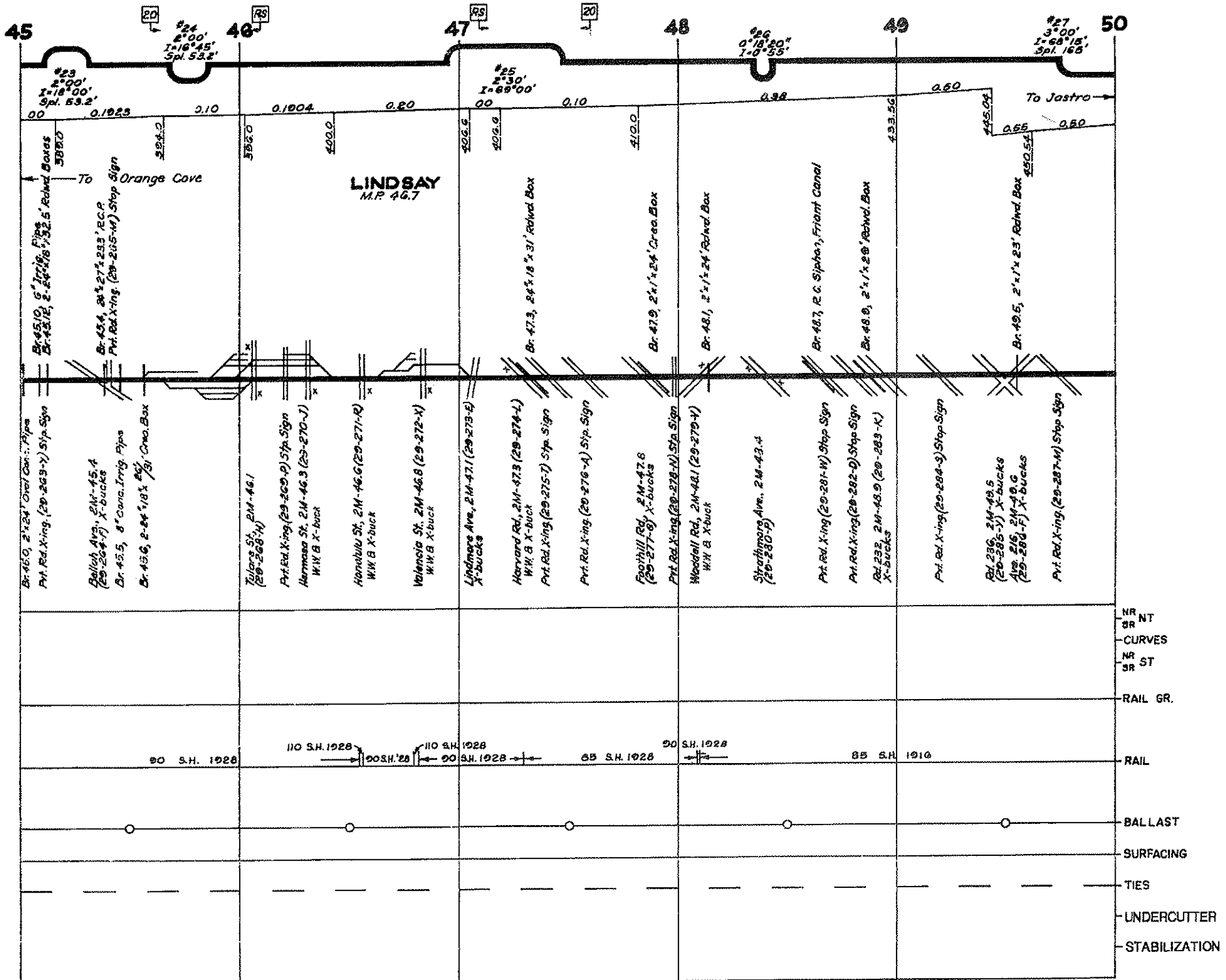
NR  
SR  
NT  
CURVES  
NR  
SR  
ST  
RAIL GR.  
RAIL  
BALLAST  
SURFACING  
TIES  
UNDERCUTTER  
STABILIZATION

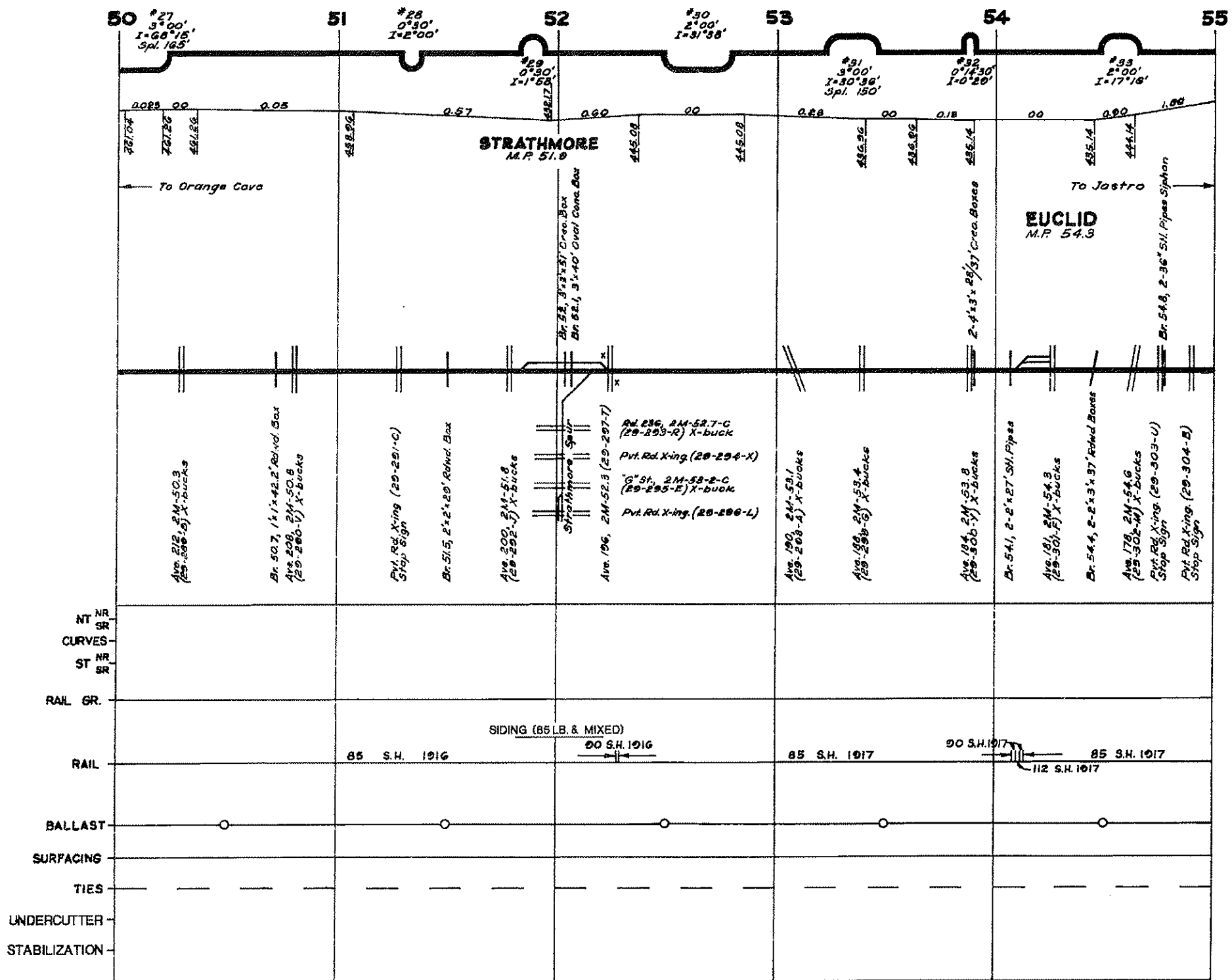






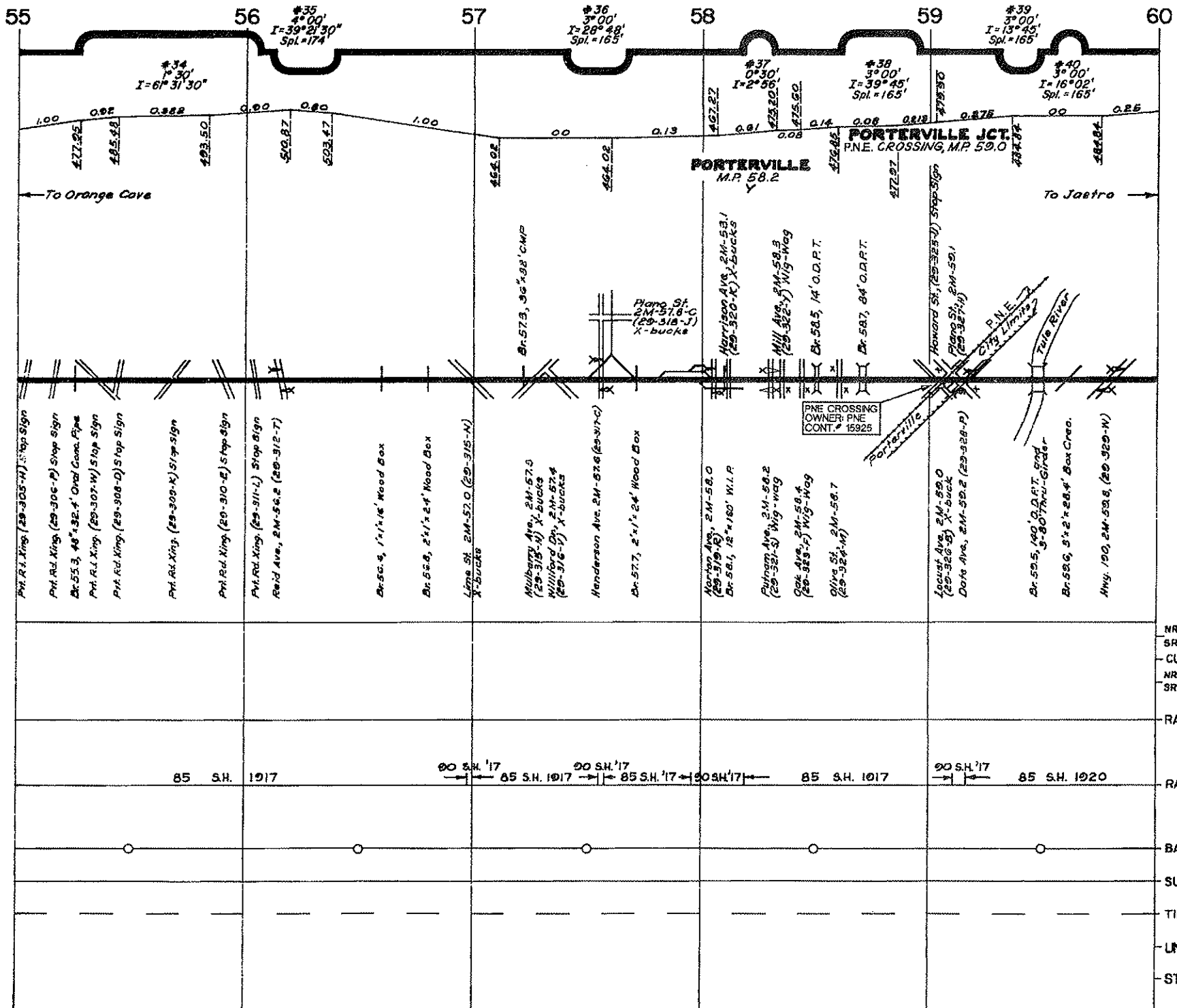


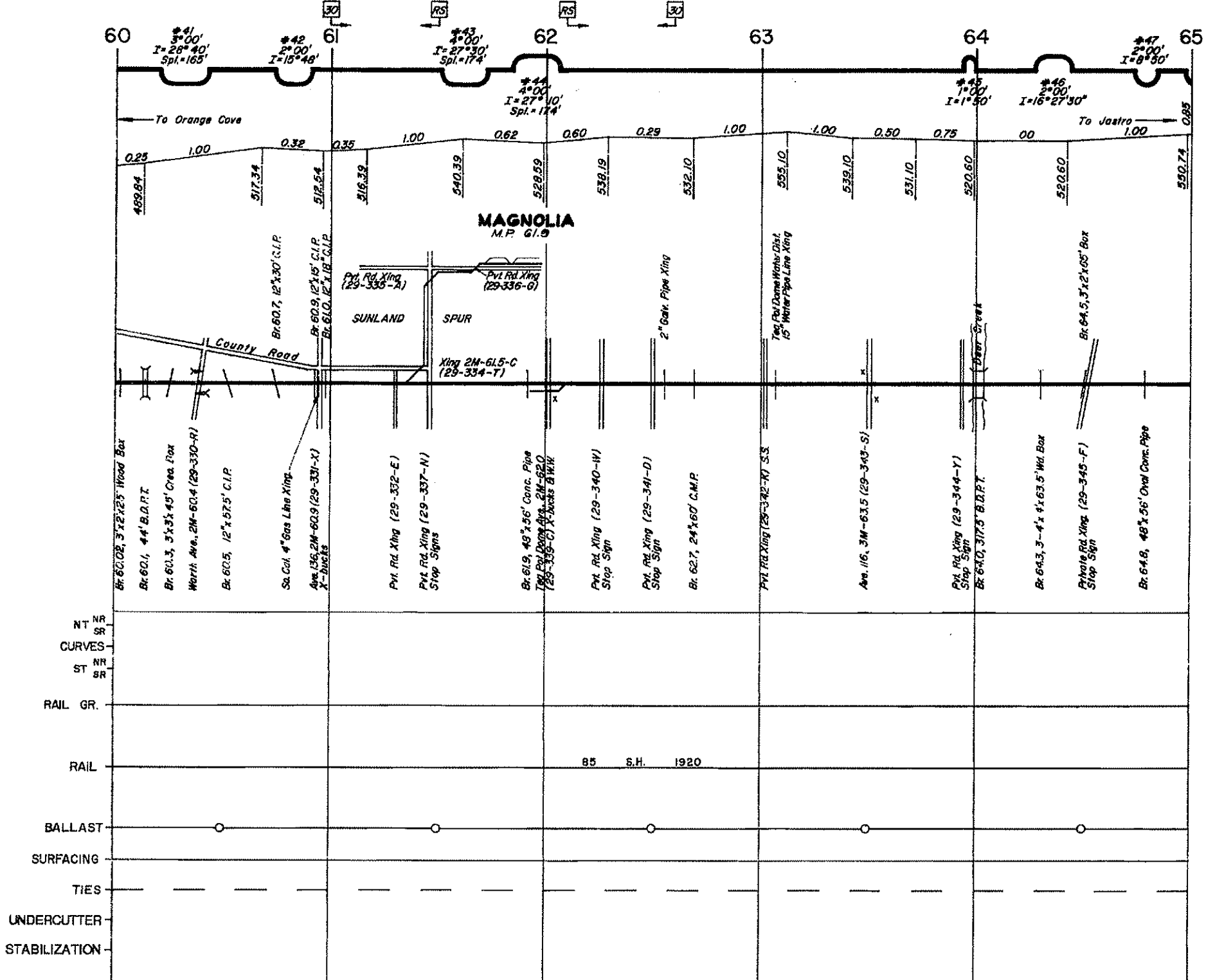




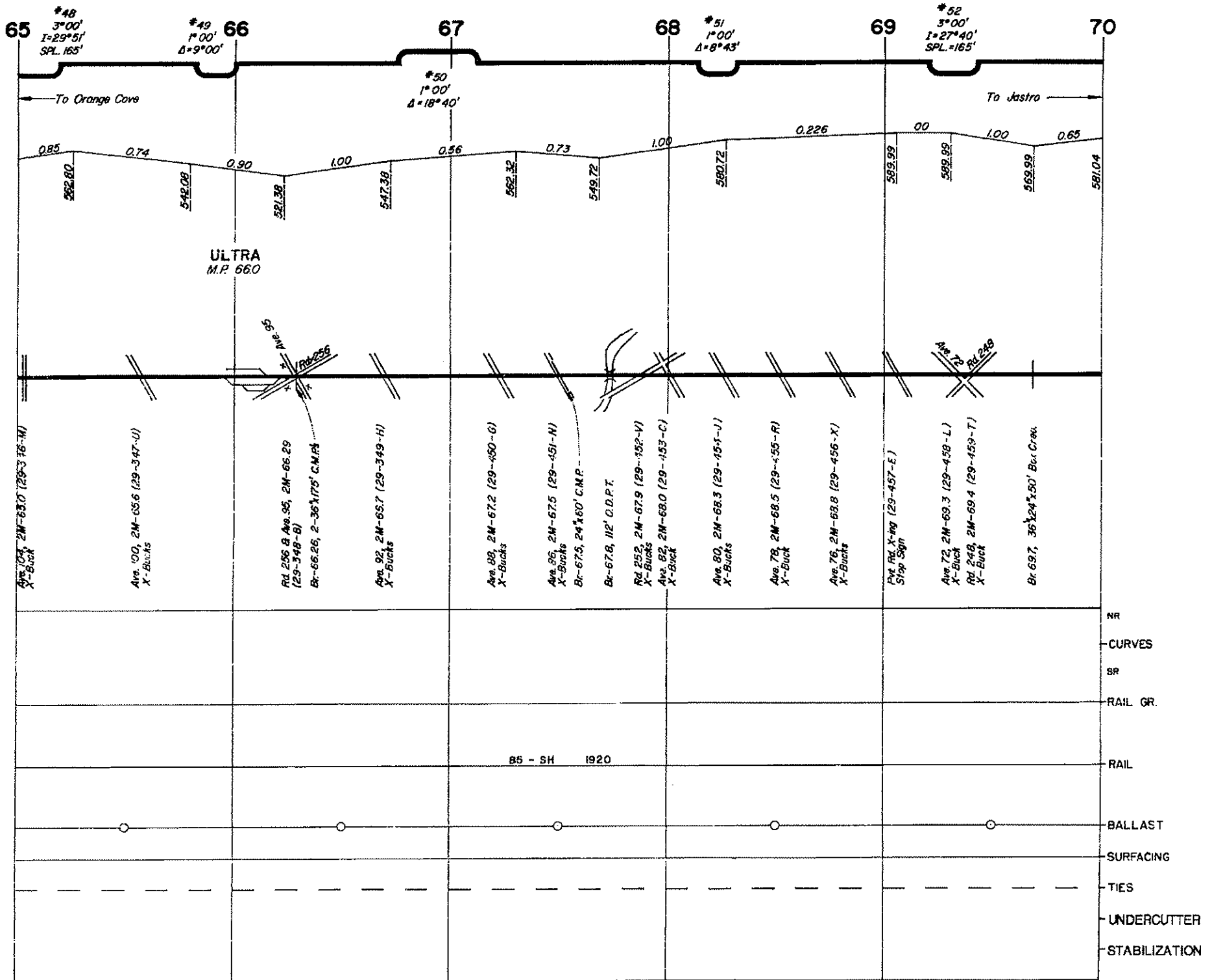
REVISED FEB. 1992

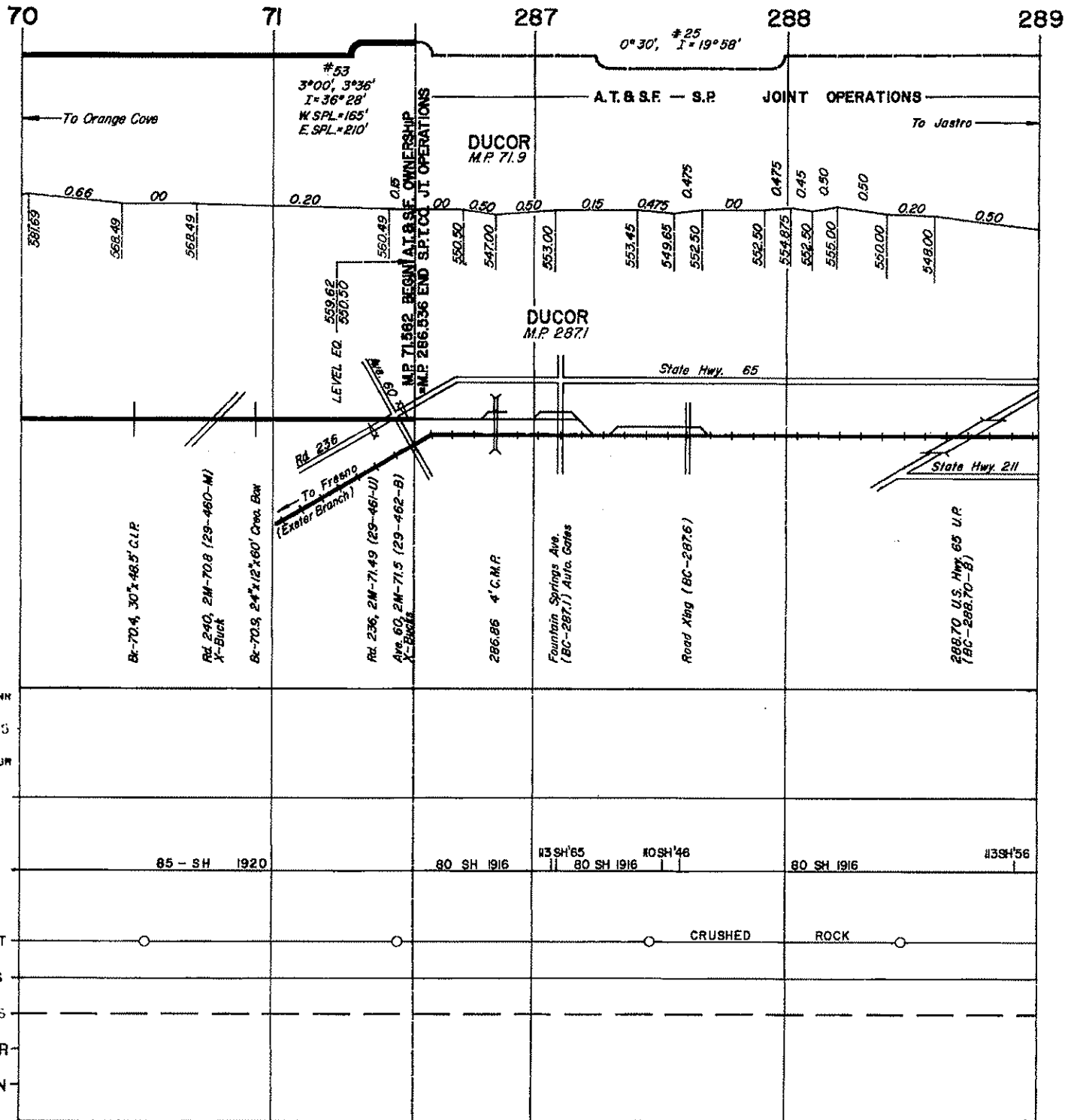
PORTERVILLE SUBDIVISION





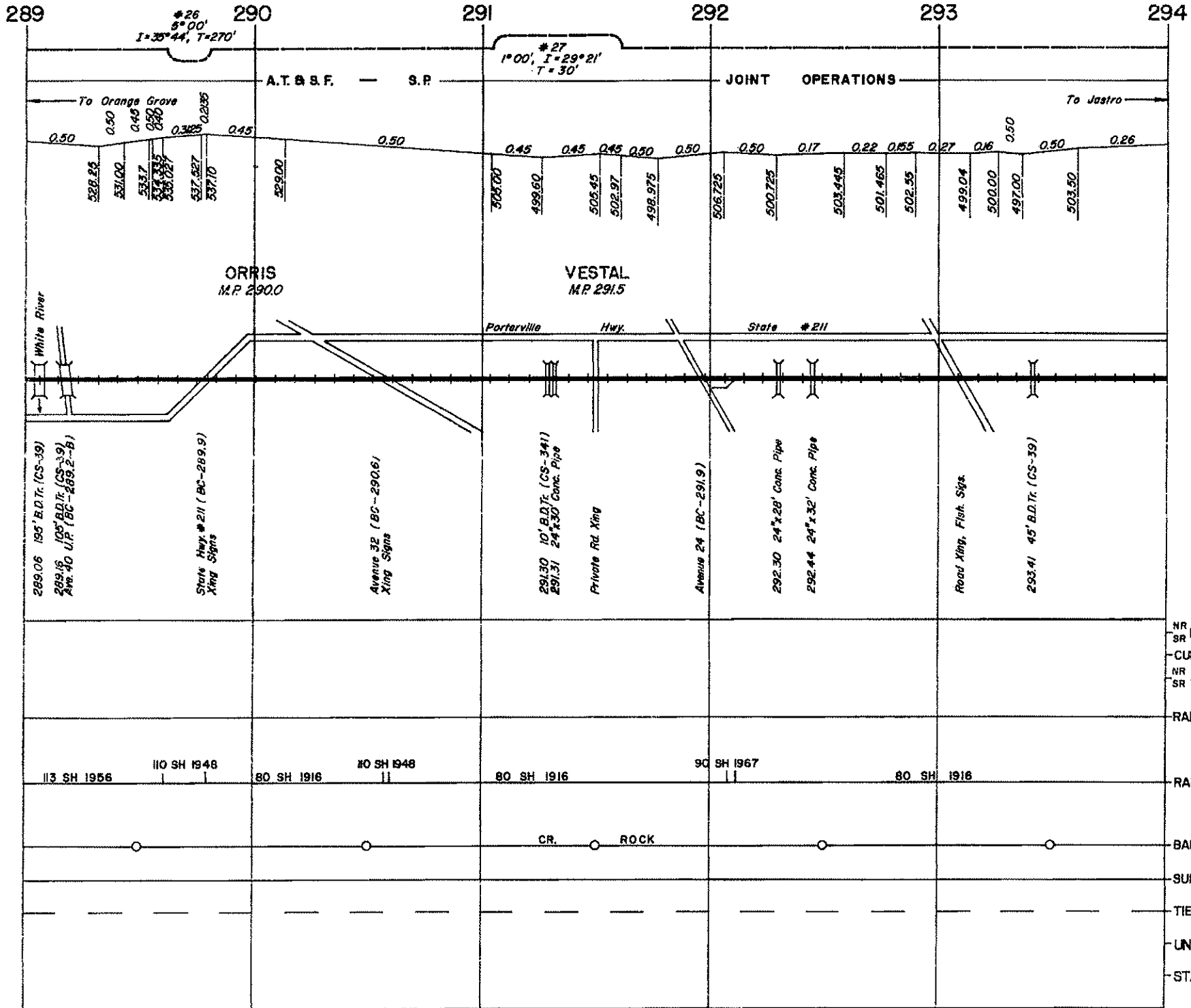
PORTERVILLE SUBDIVISION





REVISED FEB. 1992

PORTERVILLE SUBDIVISION





294

295

296

297

298

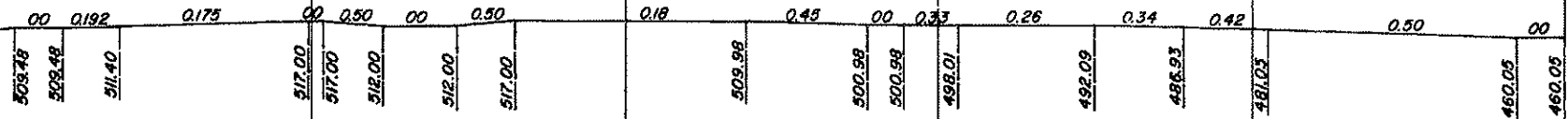
299

NO CURVES

A. T. & S. F. - S. P. JOINT OPERATIONS

To Orange Cove

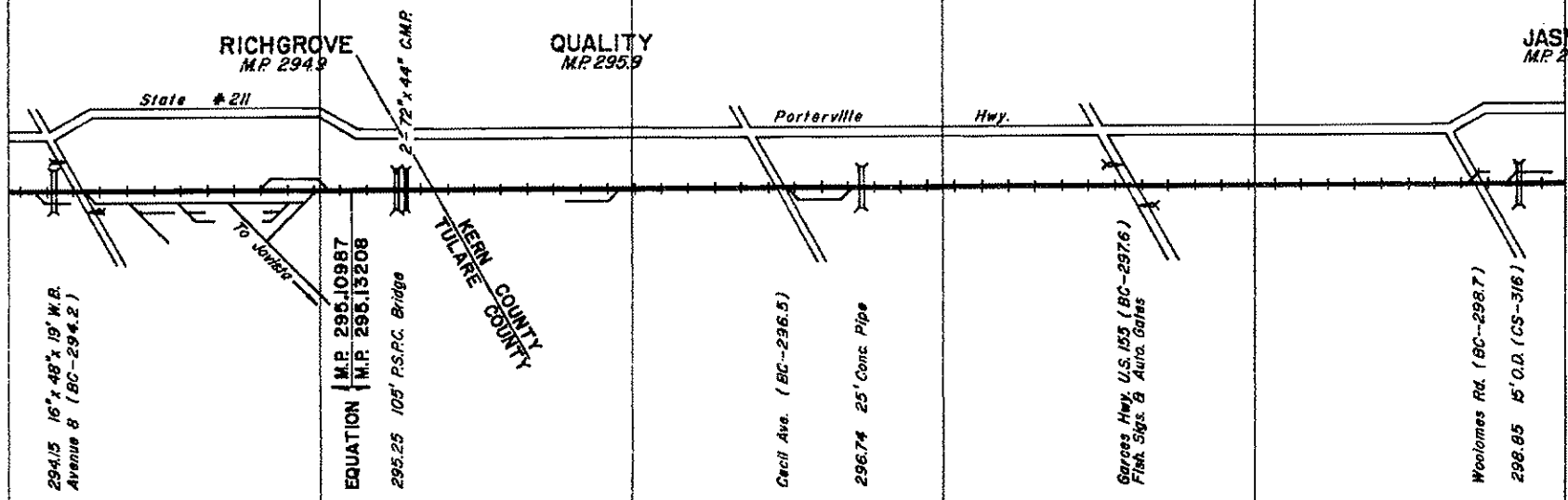
To Jastro



**RICHGROVE**  
M.P. 294.9

**QUALITY**  
M.P. 295.9

**JASMIN**  
M.P. 299.0



NT  
SR  
CURVES  
ST  
SR

RAIL GR.

RAIL  
#2 S.H. '85  
POSTING

90 S.H. 1916

#2 S.H. 1953

BALLAST

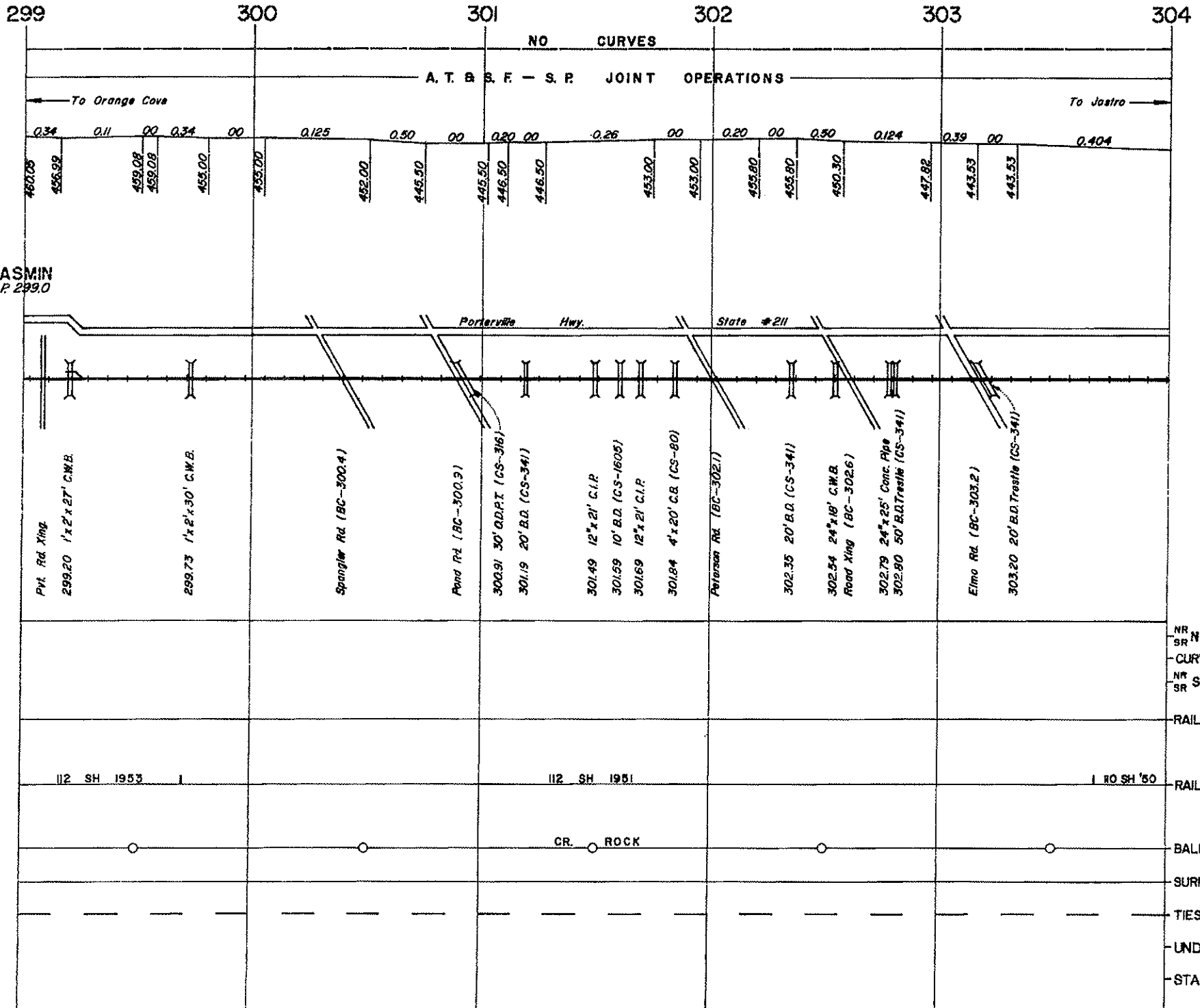
CR. ROCK

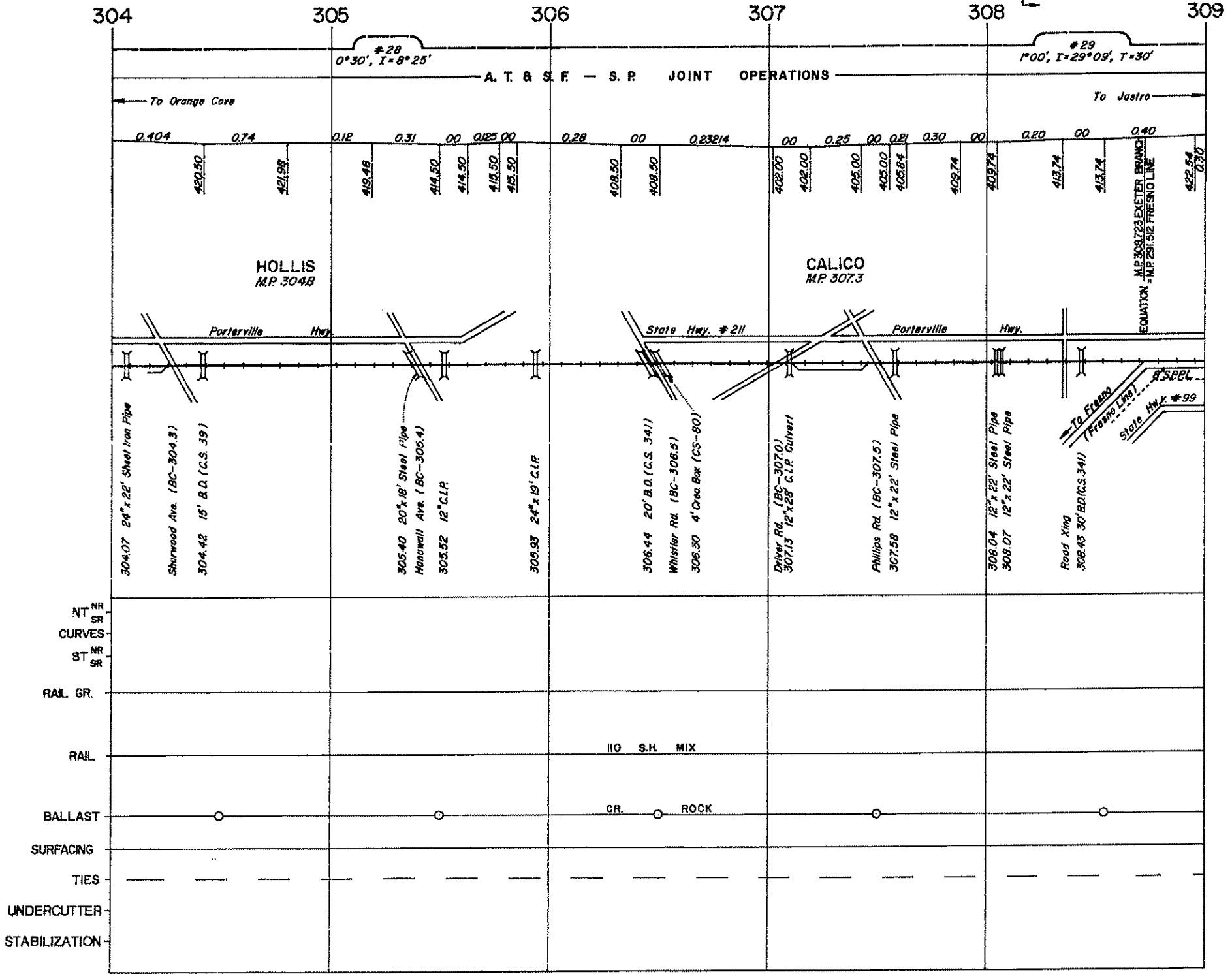
SURFACING

TIES

UNDERCUTTER

STABILIZATION





304

305

306

307

308

309

#28  
0°30', I=8°25'

#29  
1°00', I=29°09', T=30'

A. T. & S. F. — S. P. JOINT OPERATIONS

To Orange Cove

To Jastro

0.404 0.74 0.12 0.31 00 0.25 00 0.232/4 00 0.25 00 0.21 0.30 00 0.20 00 0.40

420.50 421.98 419.48 414.50 414.50 412.50 415.50 408.50 408.50 402.00 402.00 405.00 405.00 405.64 408.74 408.74 413.74 413.74 422.54 0.30

HOLLIS  
M.P. 304.8

CALICO  
M.P. 307.3

Porterville Hwy

State Hwy. #211

Porterville Hwy

EQUATION - M.P. 308.723 EXETER BRANCH - M.P. 281.512 FRESNO LINE

304.07 24"x22' Sheet Iron Pipe

Sharnwood Ave. (BC-304.3)

304.42 15' B.D. (C.S. 39)

305.40 20"x18' Steel Pipe

Hanswell Ave. (BC-305.4)

305.52 12" C.I.P.

305.93 24"x19' C.I.P.

306.44 20' B.D. (C.S. 341)

Whisper Rd. (BC-306.5)

306.80 4' Cree Box (CS-80)

Driver Rd. (BC-307.0)

307.15 12"x28' C.I.P. Culvert

Phillips Rd. (BC-307.5)

307.58 12"x22' Steel Pipe

308.04 12"x22' Steel Pipe

308.07 12"x22' Steel Pipe

Road Xing

308.43 30' B.D. (C.S. 341)

To Fresno  
(Fresno Line)  
State Hwy. #99

NT SR  
CURVES

ST NR  
SR

RAIL GR.

RAIL

BALLAST

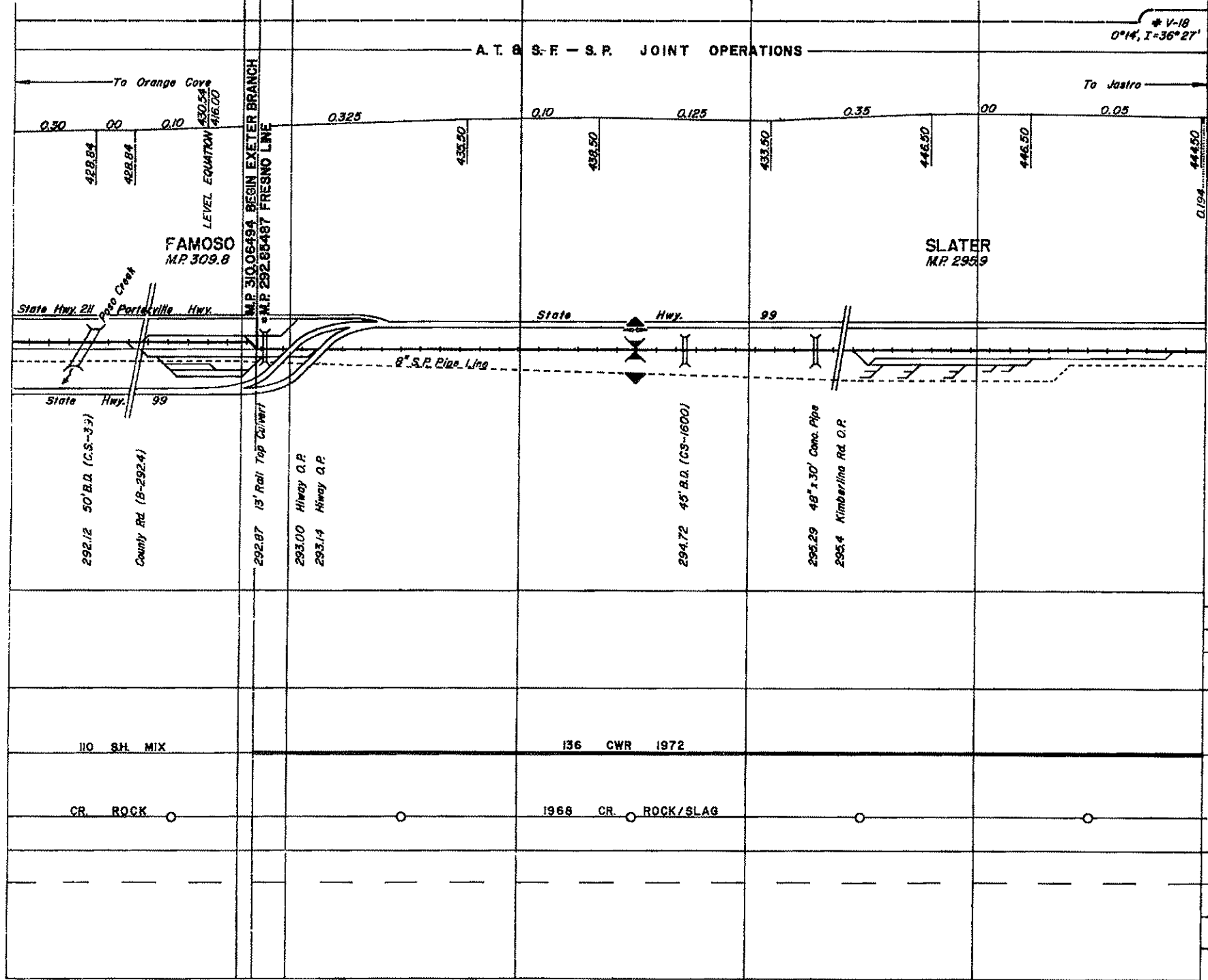
SURFACING

TIES

UNDERCUTTER

STABILIZATION

309 310 293 294 295 296 297



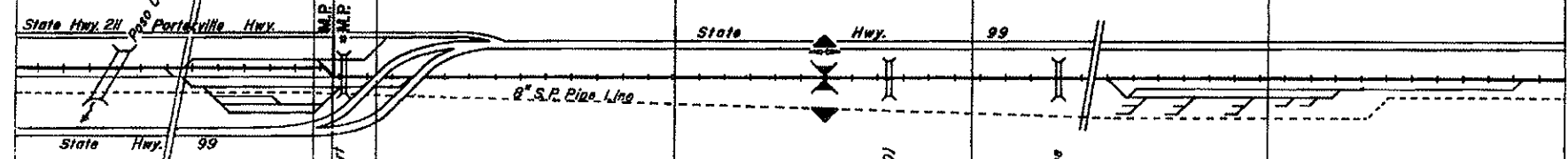
\* V-18  
0°14', I=36°27'

FAMOSO  
MP 309.8

SLATER  
MP 295.9

A.T. & S.F. - S.P. JOINT OPERATIONS

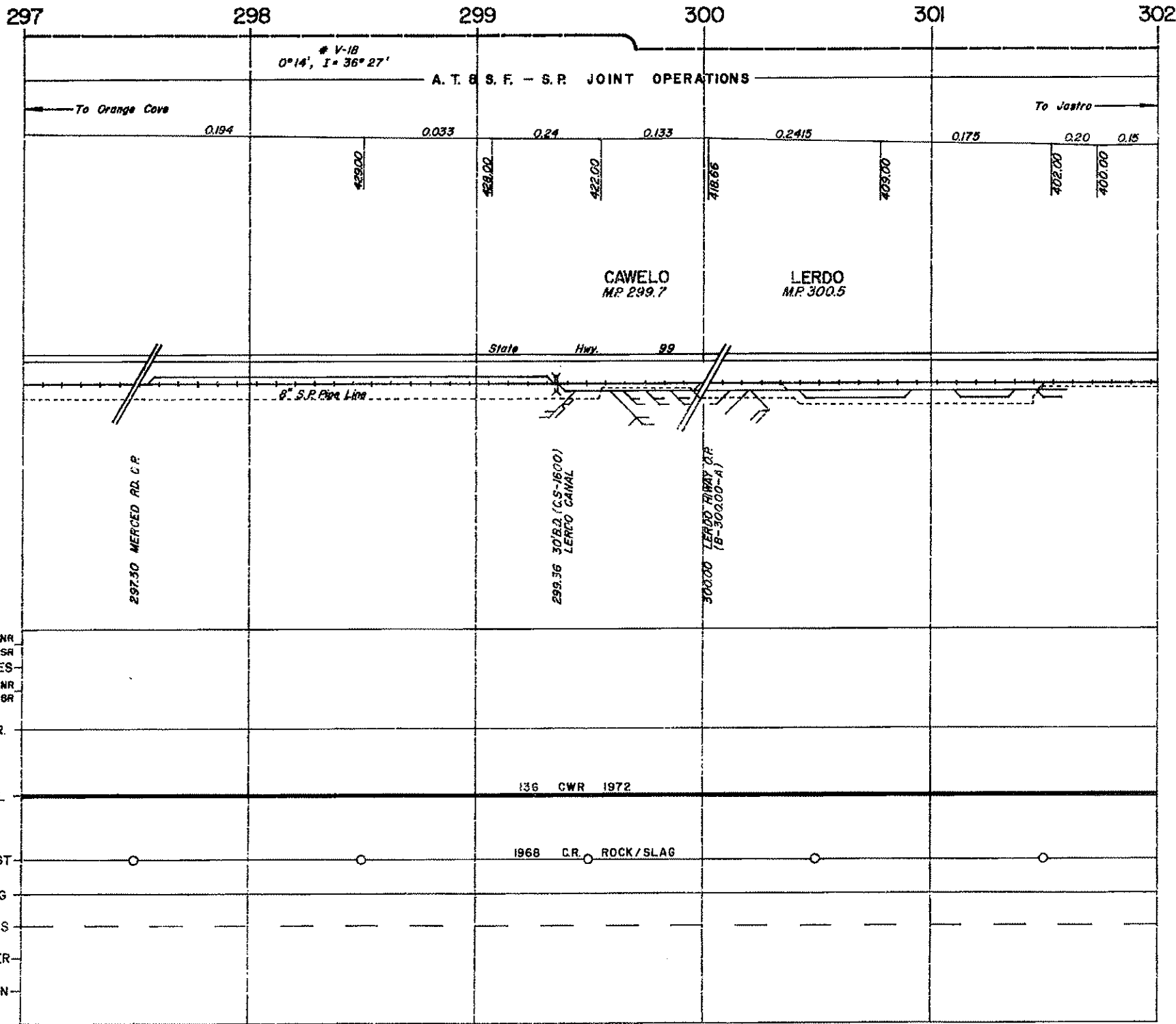
To Orange Cove ← 0.30 0.00 0.10 430.54 416.00  
 428.84 428.84  
 0.325 0.10 0.125 0.35 0.00 0.05  
 435.50 438.50 433.50 446.50 446.50 444.50  
 → To Jastro



292.12 50' B.D. (CS-33)  
 County Rd (B-292.4)  
 292.87 13' Rail Top C/W/R  
 293.00 Hiway C.P.  
 293.14 Hiway C.P.  
 294.72 45' B.D. (CS-1600)  
 295.29 48" x 30' Conc. Pipe  
 295.4 Kimberlina Rd. C.P.

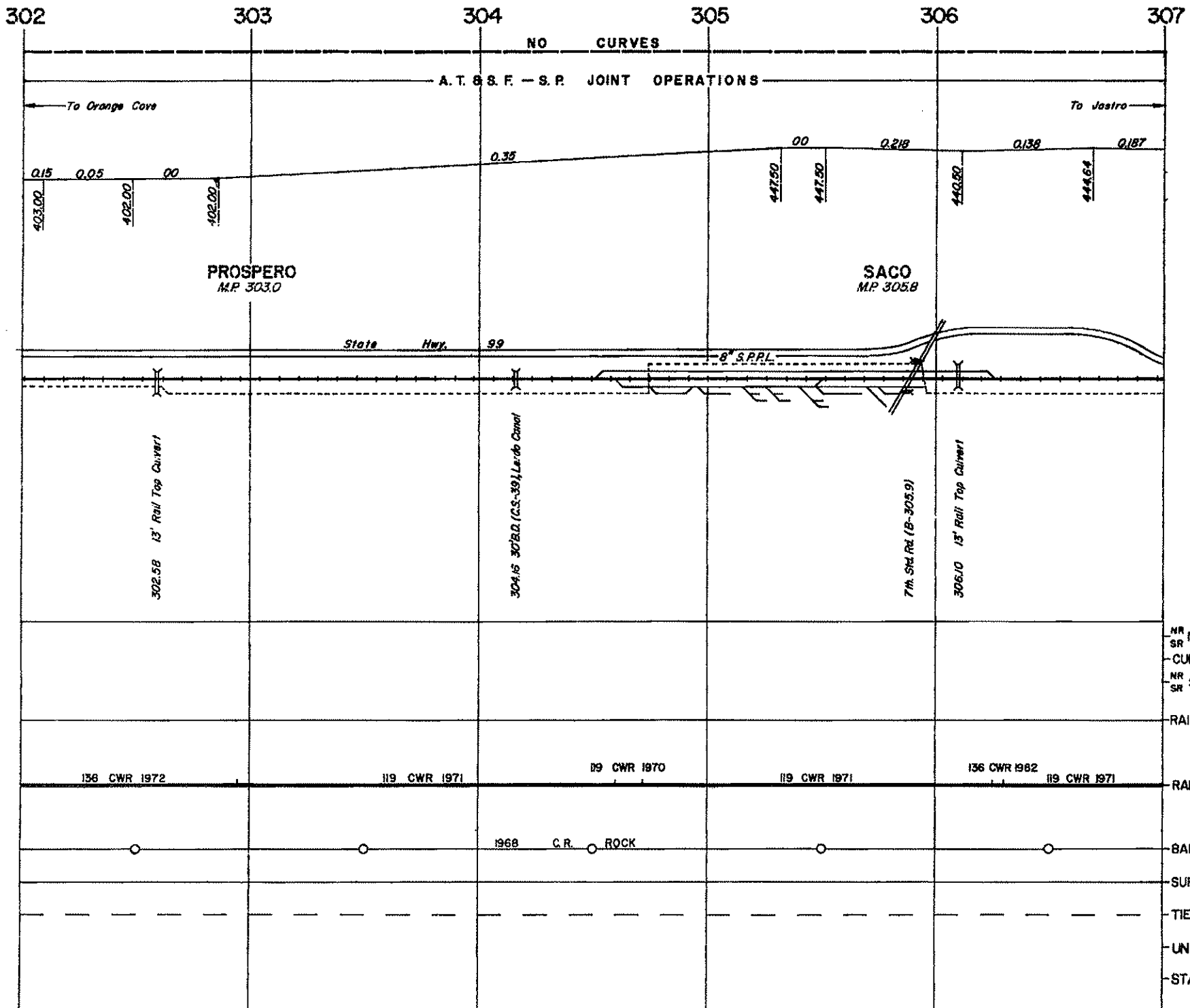
NR NT  
 SR CURVES  
 NR ST  
 SR  
 RAIL GR.  
 RAIL  
 BALLAST  
 SURFACING  
 TIES  
 UNDERCUTTER  
 STABILIZATION

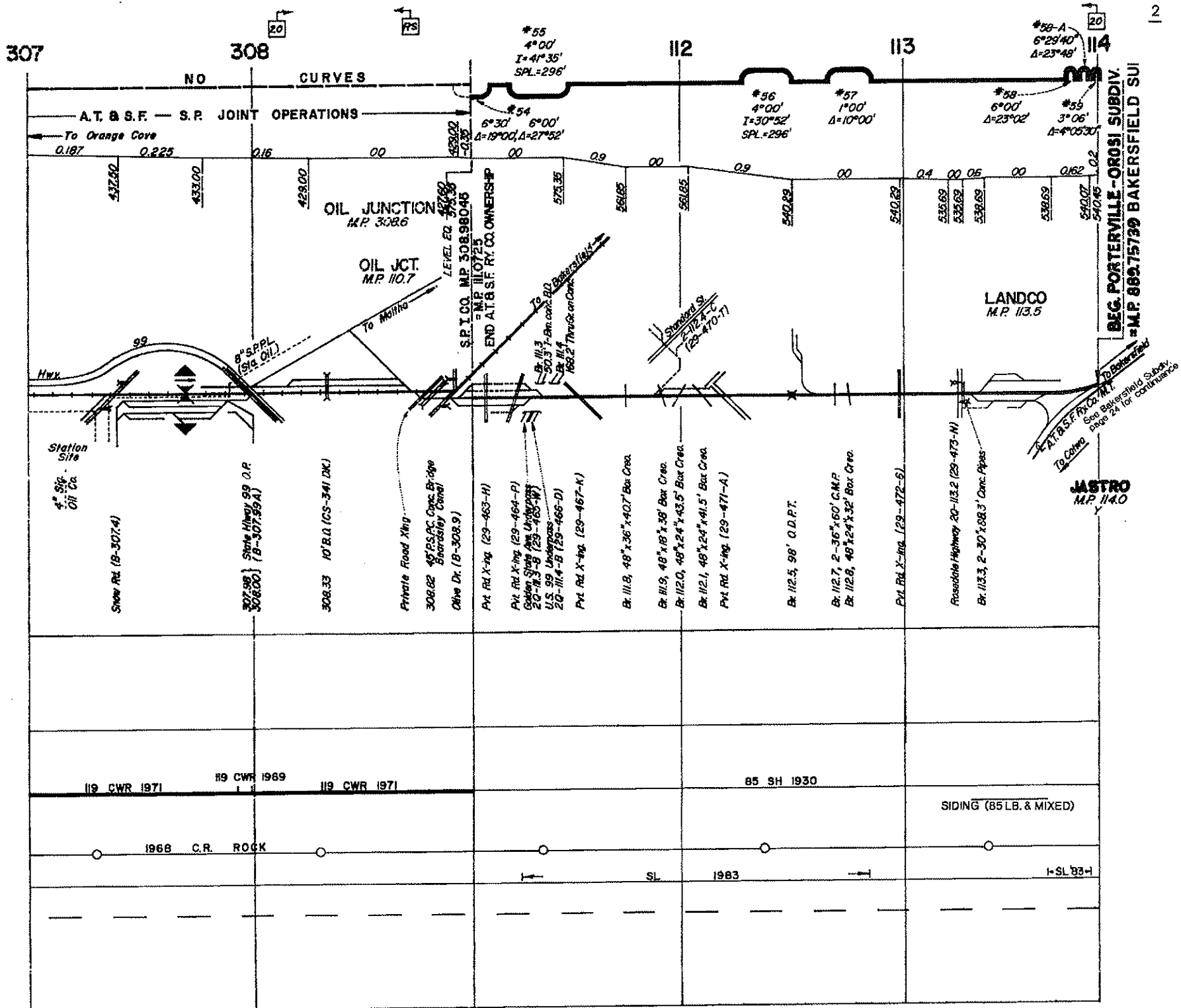
110 SH. MIX 136 CWR 1972  
 CR. ROCK 1968 CR. ROCK/SLAG



REVISED FEB. 1992

PORTERVILLE SUBDIVISION





REVISED FEB. 1992

PORTERVILLE SUBDIVISION

BEG. PORTERVILLE - OROSI SUBDIV. M.P. 869.75799 BAKERSFIELD SUI

To Bakersfield Subdiv. See Bakersfield Subdiv. page 21 for continuance

JASTRO M.P. 114.0

1

# Porterville Subdivision

Jastro (M.P. 114.0) to Orange Cove (M.P. 11.2)